

David Moor



13 Gillroyd Place Morley, Leeds, LS27 8AU

Back to back terrace house
One bedroom
Gas central heating
PVC double glazing

Separate modern kitchen
Spacious bathroom
Close to Morley centre

£650 PCM

13 Gillroyd Place

Morley, Leeds, LS27 8AU

 1

 1

 2

 G

Viewing

Living Room
15'9" x 12'8" (4.80 x 3.86)

Kitchen
13'1" x 5'9" (3.99 x 1.75)

Cellar

First floor landing

Bedroom 1
15'9" x 12'0" (4.80 x 3.66)

Bathroom

Outside

Disclaimer

Information

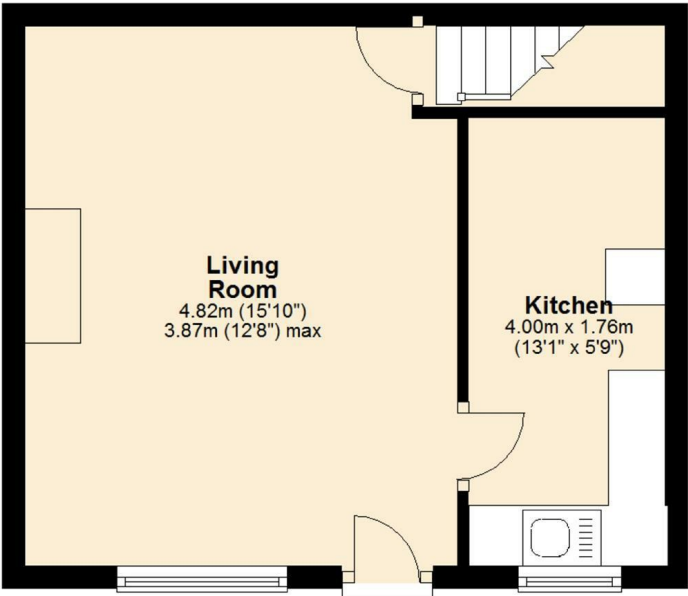




Floor Plan

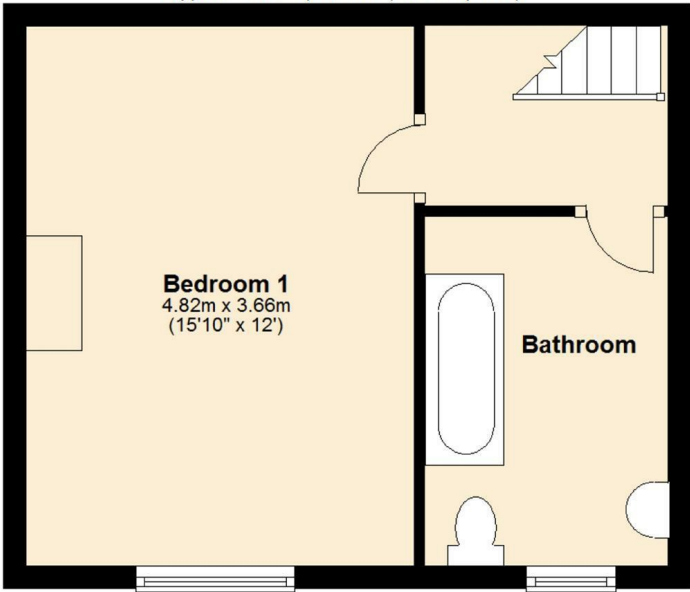
Ground Floor

Approx. 26.9 sq. metres (289.7 sq. feet)



First Floor

Approx. 26.9 sq. metres (289.7 sq. feet)



These particulars, whilst believed to be accurate are set out as a general outline only for guidance and do not constitute any part of an offer or contract. Intending purchasers should not rely on them as statements of representation of fact, but must satisfy themselves by inspection or otherwise as to their accuracy. No person in this firms employment has the authority to make or give any representation or warranty in respect of the property.

Energy Efficiency Rating		
	Current	Potential
Very energy efficient - lower running costs		
(92 plus) A		
(81-91) B		
(69-80) C		
(55-68) D		
(39-54) E		
(21-38) F		
(1-20) G	1	1
Not energy efficient - higher running costs		
England & Wales		
EU Directive 2002/91/EC		